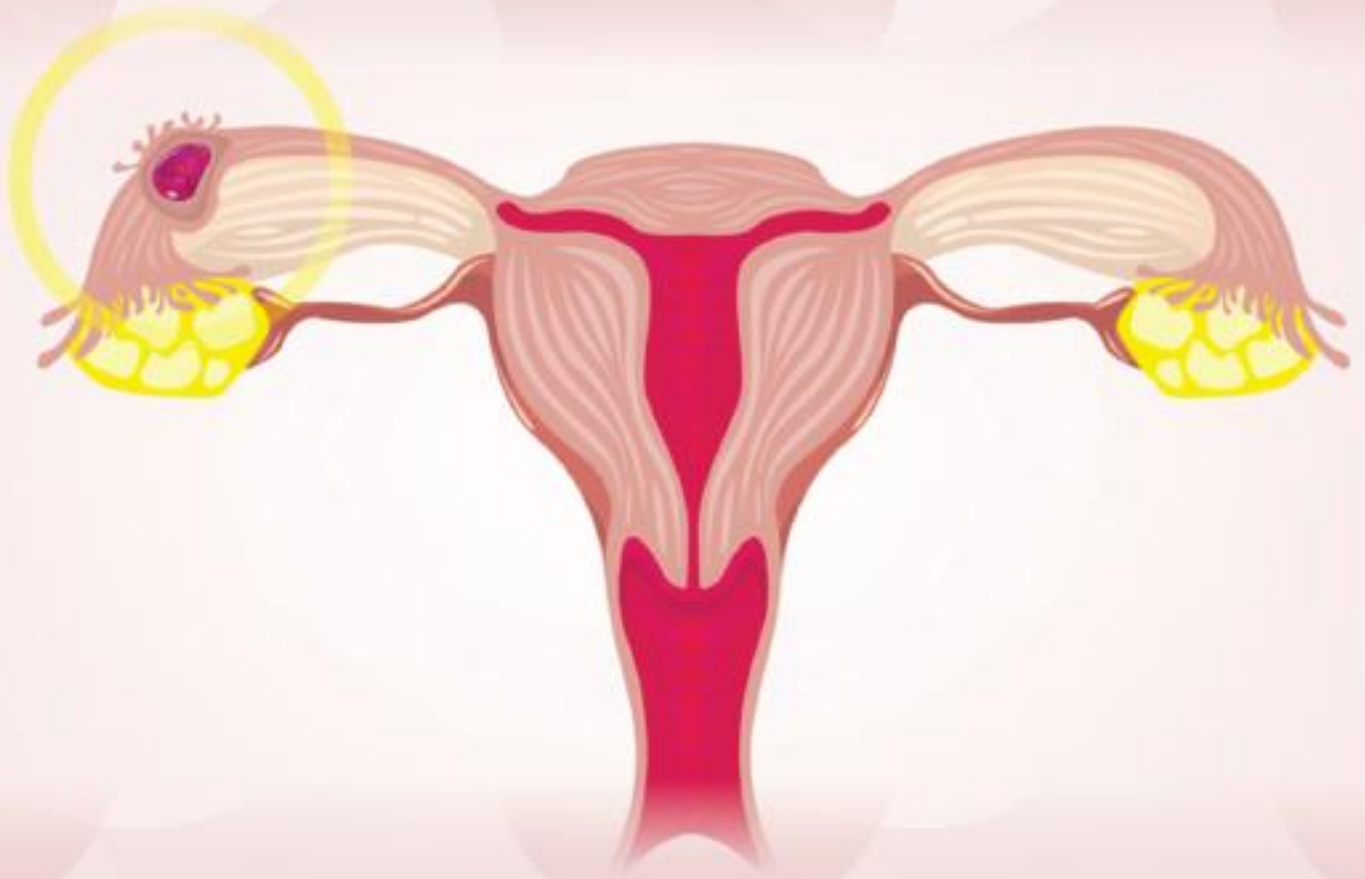




LIBRACIN

NATURAL MEDICINE IND. LTD.

enriching lives for better



PELVIC INFLAMMATORY DISEASE

- CAUSES & NATURAL REMEDY -

Dr. Bestman Anyatonwu

MEANING

Pelvic Inflammatory disease, or PID, is an infection of the female pelvis: the cervix, fallopian tubes, uterus and ovaries. Normally, infections cannot reach these organs because the cervix stops any bacteria.

However, if a sexually transmitted infection infects the cervix, the bacteria can also cause damage to other organs too. If it infects the fallopian tubes, it becomes more difficult for women to get pregnant. Pelvic inflammatory disease is more common in younger, more sexually active women.

Several different types of bacteria can cause PID, including the same bacteria that cause the sexually transmitted infections (STIs) gonorrhoea and chlamydia. What commonly occurs is that bacteria first enter the vagina and cause an infection. As time passes, this infection can move into the pelvic organs.

PID can become extremely dangerous, even life-threatening, if the infection spreads to your blood. If you suspect that you may have an infection, see your doctor as soon as possible.

BACTERIAL INFECTION

The cause of pelvic inflammatory disease is a bacterial infection of the vagina. There are several types of bacteria that can infect the vagina, the most common being Chlamydia and Gonorrhoea, both sexually transmitted diseases. Gonorrhoea is caused by the *Neisseria gonorrhoea* bacteria and chlamydia is caused by a variety of chlamydia bacterium. Your risk of pelvic inflammatory disease increases if you have gonorrhoea or chlamydia.

However, you can develop PID (Pelvic Inflammatory Disease) without ever having an STI (Sexually Transmitted Infection).

COMMON SIGNS AND SYMPTOMS

Most women don't know that they have PID because the disease doesn't have any noticeable signs. For others, symptoms include:

- **Fever** – Fever is a common symptom, with a temperature of 100.4 F or higher, sometimes accompanied by chills and nausea.
- **Vaginal discharge** – pelvic inflammatory disease may also cause greenish or yellowish vaginal discharge, which is usually foul smelling.
- **Irregular menstruation** – PID may irregular or longer menstrual cycles with frequently reoccurring cramps, which can last the whole month.
- **Painful sex** – pelvic inflammatory disease can cause sex to be painful due to inflammation and infection of the vagina. If PID was caused by either gonorrhoea or chlamydia, it can be passed to a partner.
- **Painful urination** – since the pelvic area is inflamed, women may feel pain and discomfort whenever they urinate.
- **Vomiting and diarrhoea** – people with PID may also have diarrhoea, and they may vomit frequently.

Some women with pelvic inflammatory disease don't have symptoms. For the women who do have symptoms, these can include:

- pain in the lower abdomen (the most common symptom)
- pain in the upper abdomen
- fever
- painful sex
- painful urination
- irregular bleeding
- increased or foul-smelling vaginal discharge and tiredness

If you have severe symptoms, call your doctor immediately or go to the emergency room. The infection may have spread to your bloodstream

or other parts of your body. Once again, this can be a life-threatening condition.

- **Sex** – The most common way to get PID is through unprotected sex with someone who has an STD. Women who are more sexually active, such as younger women are more likely to get PID.
- **Un-sanitized medical equipment** – Women can get pelvic inflammatory disease from unsanitized medical equipment. They can get the infection when giving birth, having an abortion, miscarriage, pap smear test or when anything contaminated is inserted into their vagina. Because of high hygienic standards in hospitals, this mode of transmission is relatively rare.
- **Mysterious infections** – There are some cases of pelvic inflammatory disease where the mode of transmission cannot be traced. These women didn't have an STD or were not operated on using contaminated equipment. These cases are very rare.
- **Have safe sex**– Ask your partner to use a condom, especially if you are having sex with different people. If you are on the pill, it's still important to use condoms to protect against sexually transmitted infections.
- **Get tested** – It's worth knowing your own and your partner's status before you have sex. Testing is relatively easy, just a simple appointment. If you have an STD, it's important to tell your partner. And if you don't, that knowledge will bring peace of mind.
- **Be responsible** – Younger women are generally more sexually active than older and mature women. If you have more than one sexual partner, practice safe sex. Remember the more sexual partners you have, the higher your chances of contracting an STD.

HERBAL REMEDY

Libracin herbal alternative is the answer:

- A. Neem Tea: <http://libracin.com/product/neem-tea/>
- B. Libracin Herbal Tablet: <http://libracin.com/product/libracin-herbal-tablet/>
- C. Nutrishield: <http://libracin.com/product/nutrishield/>
- D. Bounty: <http://libracin.com/product/bounty-herbal-tea/>



CONTACT US



LIBRACIN
NATURAL MEDICINE IND. LTD.
enriching lives for better

123 Ulasi Road, Aba/P.O.Box 3365, Aba, Abia State, Nigeria

Phone: (234) 08037504426, 08132836825, 07038595483, 08038920771, 08052978050, 08179705615,
09092986907, 08107508177, 09067998409, 09068750055, 09065449561

Email: info@libracin.com OR libracinweb2@yahoo.com

www.facebook.com/libracinnaturalmedicine

www.libracin.com

BRANCHES

LAGOS:

OSHODI:

447, 2nd Floor (back) Agege Motor way,
Bolade Bus stop, Oshodi Lagos State.
09065409970, 08035258845.

SURULERE:

1B Adeniyi Adefloye Street,
Marsha -Kilo Link Road,
Car Wash, Ikate Surulere, Lagos State.
09067687536, 08156811248
09079852695, 08170715107

ABUJA FCT:

KUBWA:

Hadza Plaza,
Opposite Channel 8 Junction,
Kubwa Abuja, FCT.
08104248293, 08060738106

ZUBA:

Shop No B4, Zuba Plaza,
Zuba, Abuja FCT.
09094061768, 09060823886

DUTSEN:

Shop 60/61 MMG Shopping Complex,
1st Gate, Dutsen Alhaji, Abuja FCT.
07068259254, 09060732488

BWARI:

Atanu Plaza, Beside Peace Park,
Opposite Bwari Market, Bwari Abuja FCT.
08138622678, 09065450205

MARARABA:

Fortress Plaza, Shop No. C7 2nd Floor,
Abuja/Kiffi Exp. Way, Sharp Corner,
Mararaba, Abuja FCT.
08100784750, 09060942743

MPAPE:

Ansar Plaza,
Suit No. 109 By Oceanic/Begger Junction,
Mpape, Abuja FCT.
08066745186, 09064999439

KURUDU:

De-Bright Plaza, Kurudu Junction,
By Orozo/Karshi Road, Abuja FCT.
09036188267, 09068730988